



ComplyEd Web App

Education Inspection Toolkit

Where Compliance Meets Innovation
for Education's Bright Future



Contents

School Information

Post-Ofsted Action Plan

Education Inspection Toolkit

Long Term Strategic Plan

School Development Plan

School Self Evaluation Form

Subject On A Page

Website Compliance Checklist

Calendar

Evidence Library

Action Plan Status Report

School Information

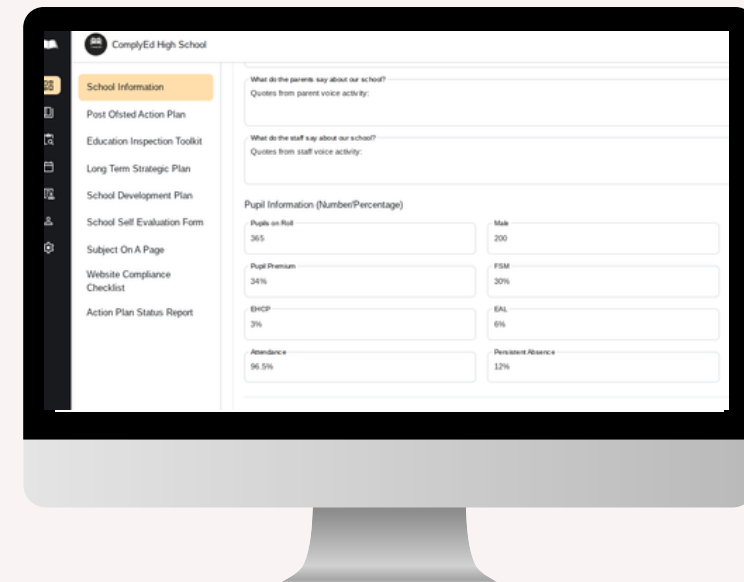
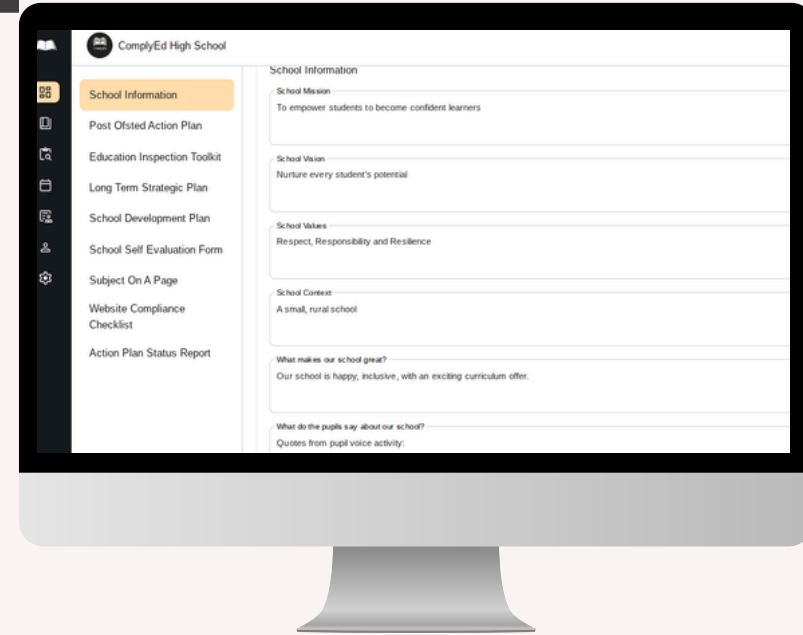
Our School Information page provides a clear, one-page overview of your school's context.

Shows your school's mission, vision and values

Shows key numerical pupil data.

Provides stakeholders with a clear, evidence-based snapshot of your school's identity and community.

All ComplyEd plans and tools can be exported as professional PDF documents, ready to share at SLT meetings, staff briefings, and Governing Body meetings. This ensures key information is accessible, consistent, and easy to present, keeping everyone aligned and inspection-ready.



Post-Ofsted Action Plan

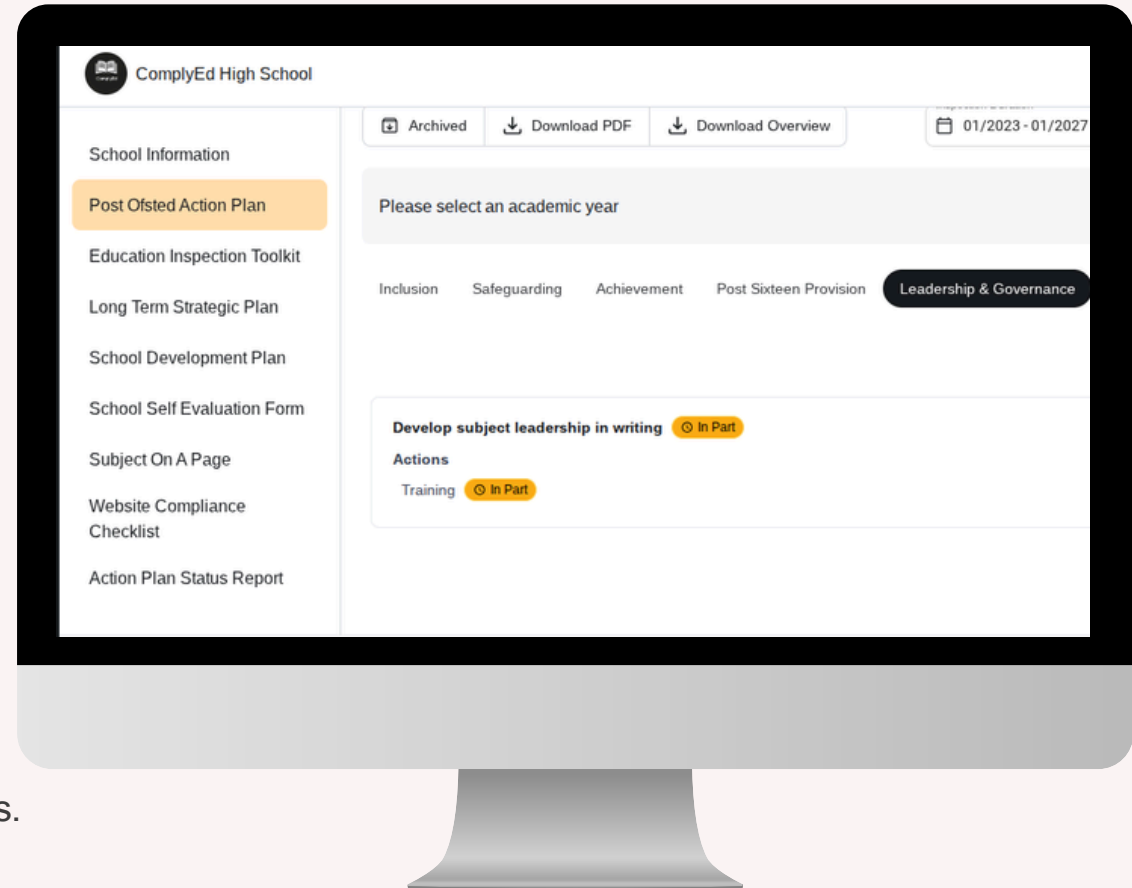
The Post-Ofsted Action Plan feature allows schools to create action plans following an Ofsted Inspection.

Identify areas for improvement based on Ofsted feedback

Assign staff members to each action item to ensure accountability

Set specific actions and timelines for addressing the identified recommendations

All ComplyEd plans and tools can be exported as professional PDF documents, ready to share at SLT meetings, staff briefings, and Governing Body meetings. This ensures key information is accessible, consistent, and easy to present, keeping everyone aligned and inspection-ready.



Education Framework Toolkit

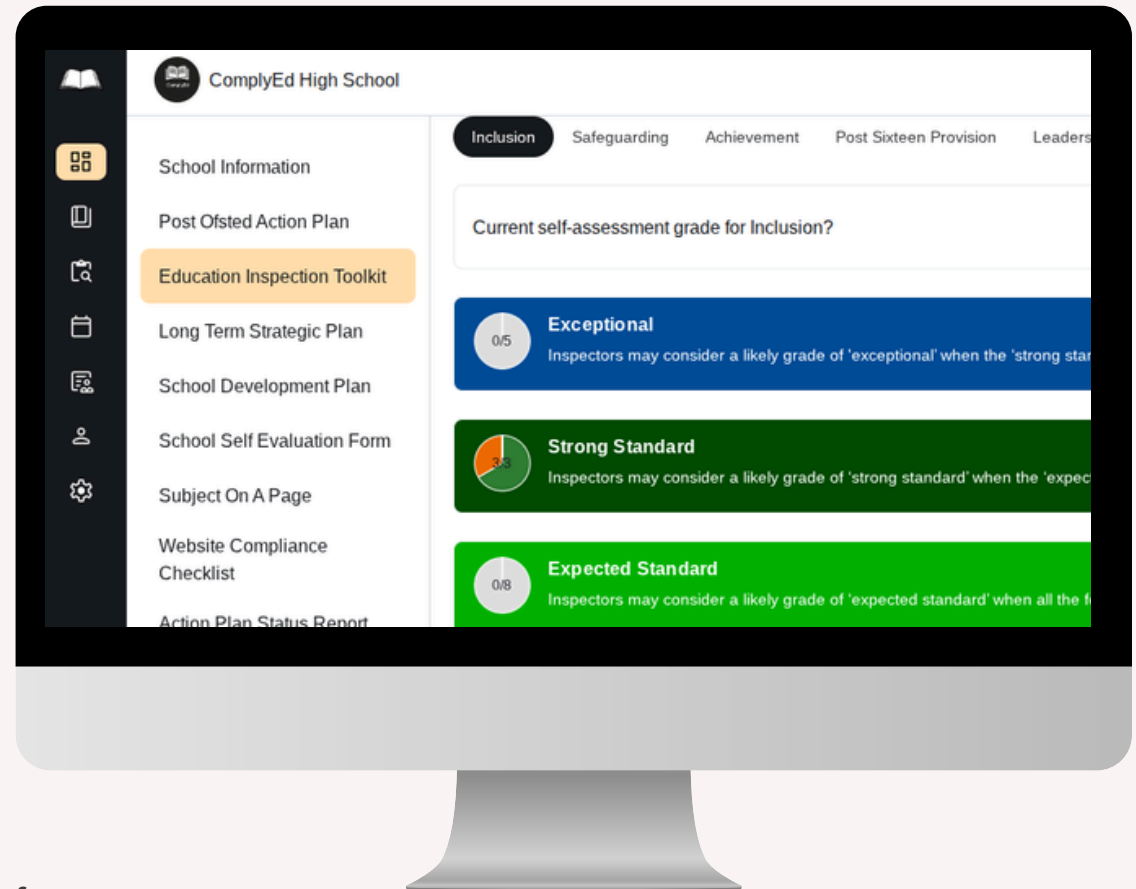
The EIT is designed to help schools prepare for inspections by ensuring they have all the necessary evidence and documentation.

Self-assess against the new inspection criteria

Upload relevant documents and evidence for inspection

Gives schools the confidence that they are meeting the required inspection standards

ComplyEd will guide you through the specific areas of inspection and ensure you meet all the required standards.



Long Term Strategic Plan

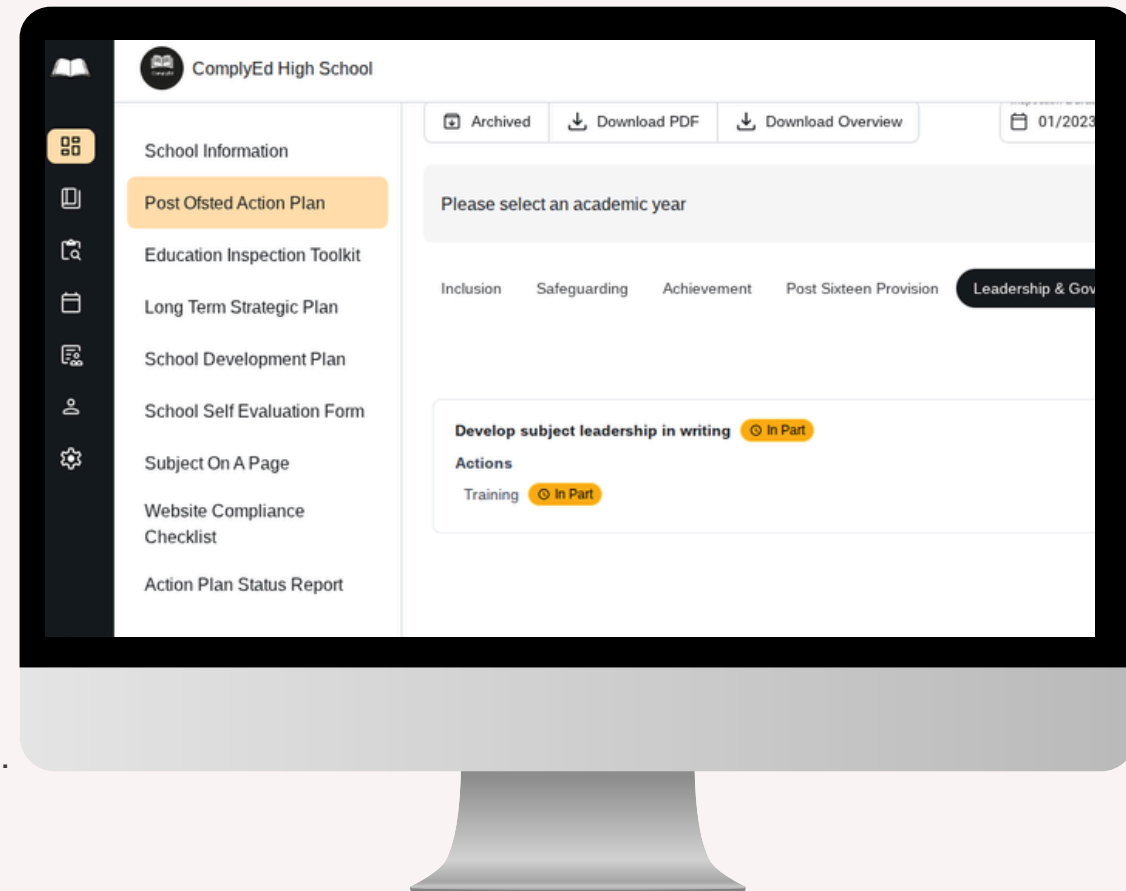
The Long-Term Strategic Plan enables schools to map out their key goals over a multi-year period.

Add the school context, mission, vision and values

Track and review progress to ensure the school stays on course with its mission

Set reminders to review annually or as and when needed

All ComplyEd plans and tools can be exported as professional PDF documents, ready to share at SLT meetings, staff briefings, and Governing Body meetings. This ensures key information is accessible, consistent, and easy to present, keeping everyone aligned and inspection-ready.



School Development Plan

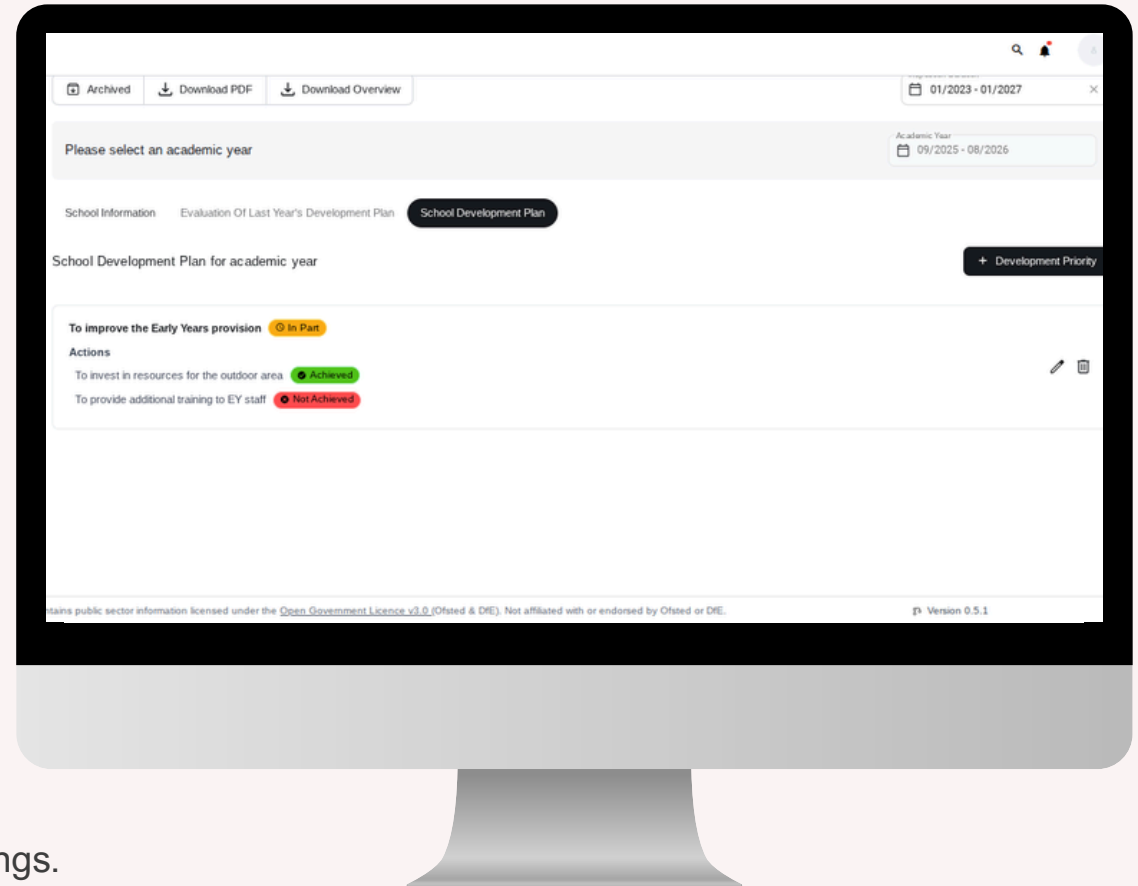
The School Development Plan section helps schools create and manage their development strategy.

Create the school's development journey

Create actionable steps to achieve the school's vision

Track progress on each objective and make updates as necessary

All ComplyEd plans and tools can be exported as professional PDF documents, ready to share at SLT meetings, staff briefings, and Governing Body meetings. This ensures key information is accessible, consistent, and easy to present, keeping everyone aligned and inspection-ready.



School Self-Evaluation Form (SEF)

The Self-Evaluation Form (SEF) allows schools to evaluate their performance against key criteria.

Complete the form to identify strengths and next steps

Add the school context, mission, vision and values

Make updates as and when needed to ensure continuous improvement

All ComplyEd plans and tools can be exported as professional PDF documents, ready to share at SLT meetings, staff briefings, and Governing Body meetings. This ensures key information is accessible, consistent, and easy to present, keeping everyone aligned and inspection-ready.

The screenshot displays the 'ComplyEd High School' interface for the 'School Self Evaluation Form'. On the left, a sidebar lists various school documents, with 'School Self Evaluation Form' highlighted in orange. The main content area is titled 'Please select an academic year' and features a navigation bar with tabs for 'School Information', 'Inclusion', 'Safeguarding', 'Achievement', 'Post Sixteen Provision', 'Leadership & Governance', and 'Personal Development & Well-being'. The 'Inclusion' tab is currently selected. Below the navigation bar, the form asks for the 'Current self-assessment grade for Inclusion?' and shows a 'Strength 1' with a 'Strong Standard' indicator. The form includes sections for 'Strengths', 'How do we know?', and 'Next Steps'. At the bottom, a small disclaimer states: 'This system contains public sector information licensed under the Open Government Licence v3.0 (Ofsted & DfE). Not affiliated with or endorsed by Ofsted or DfE.'

Subject On A Page

The Subject on a Page feature allows schools to summarise plans for key subjects in the school curriculum.

Provide essential information for each subject

Identify the intent, planned implementation, and impact for each subject

Keep the data updated for easy access and inspection readiness

All ComplyEd plans and tools can be exported as professional PDF documents, ready to share at SLT meetings, staff briefings, and Governing Body meetings. This ensures key information is accessible, consistent, and easy to present, keeping everyone aligned and inspection-ready.

Edit Subject Information Update

Subject Information

Subject Name Key Stage of Education

Intent (What and Why?)
To develop confident students who can apply problem solving and reasoning skills in everyday life

Implementation (How?)
High quality CPD to build staff knowledge.
Curriculum maps.
Targeted intervention

Financial Implications
2000

Challenges / Barriers
High level of SEN
Attendance

Impact (So what?)
Children enjoy maths
They are ready to progress to the next stage in their learning

Annual Impact
Numbers of children at ARE increased by 10% on year

Version: 0.1

Website Compliance Checklist

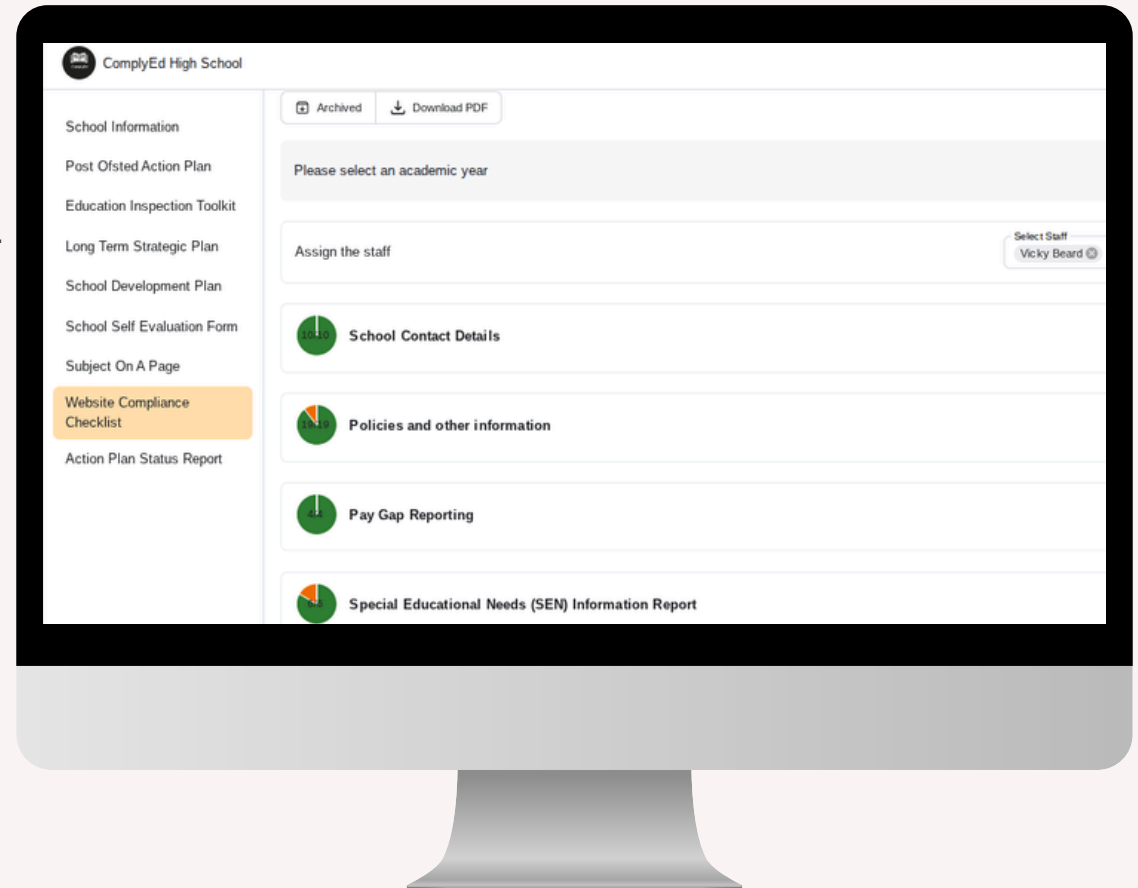
The Website Checklist tool is used to ensure schools websites are compliant with all necessary regulations.

Allocate this task to a member of staff

Review each requirement, including safeguarding, curriculum, and governance information

Receive termly updates to complete the Checklist to ensure compliance

All ComplyEd plans and tools can be exported as professional PDF documents, ready to share at SLT meetings, staff briefings, and Governing Body meetings. This ensures key information is accessible, consistent, and easy to present, keeping everyone aligned and inspection-ready.



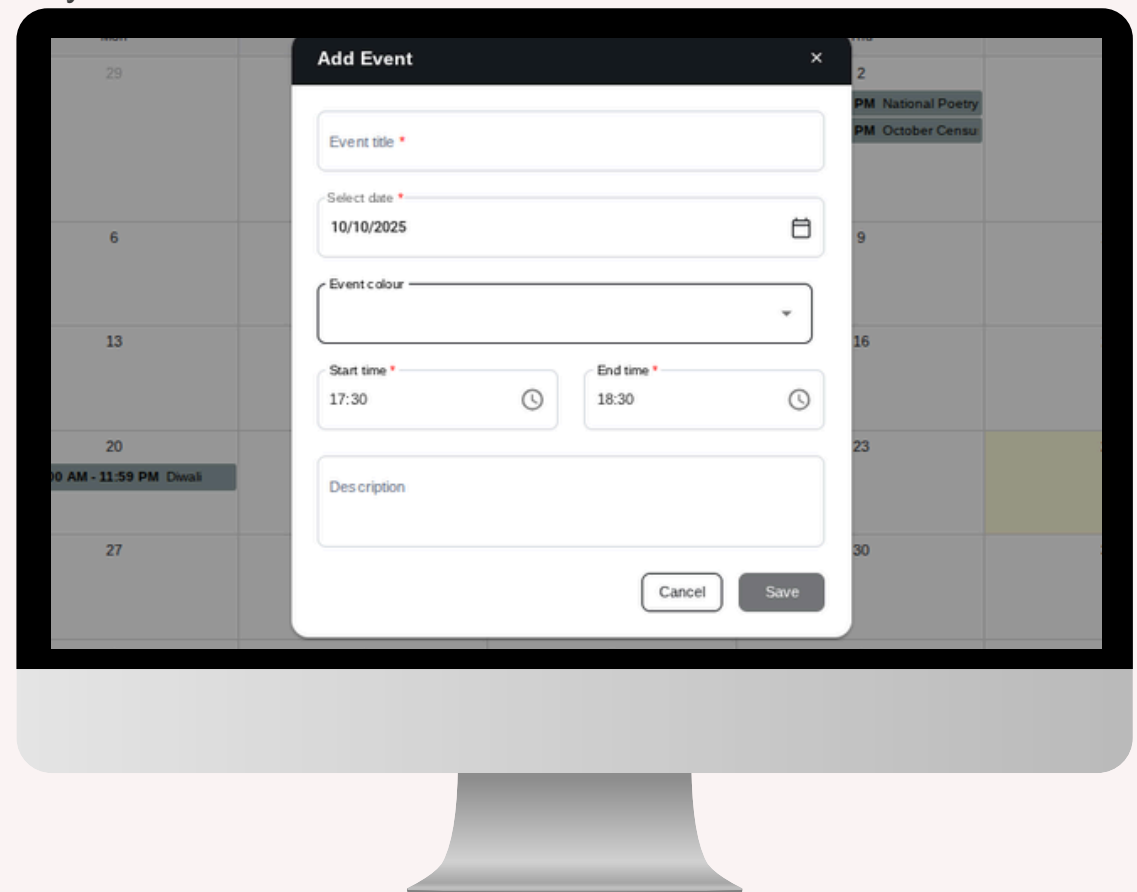
Calendar

The calendar feature helps schools keep track of every important date and deadline.

Manage important dates and deadlines

Create events for meetings, inspections
and other key dates

Categorise events using a colour-coding system
to enhance clarity and organisation



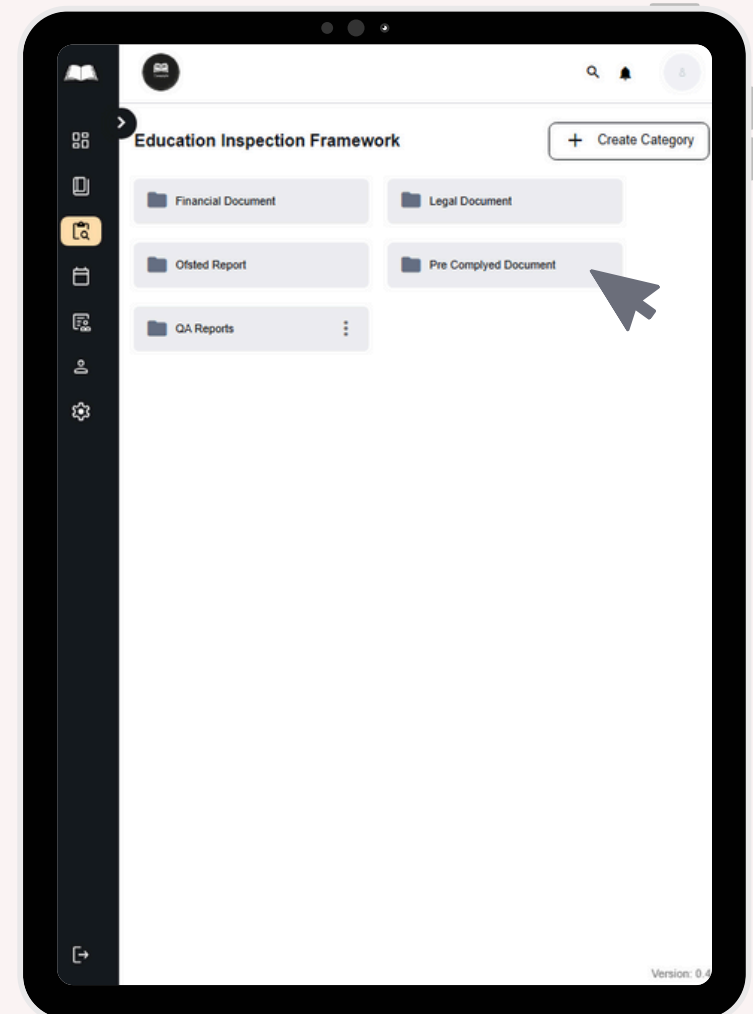
Evidence Library

The Evidence Library is a repository for all of the school's key documents and evidence.

Ensure your documents are all stored in a safe, central place

Easily link evidence library documents into other system sections

Upload and categorise documents such as policies, reports, action plans and critical evidence

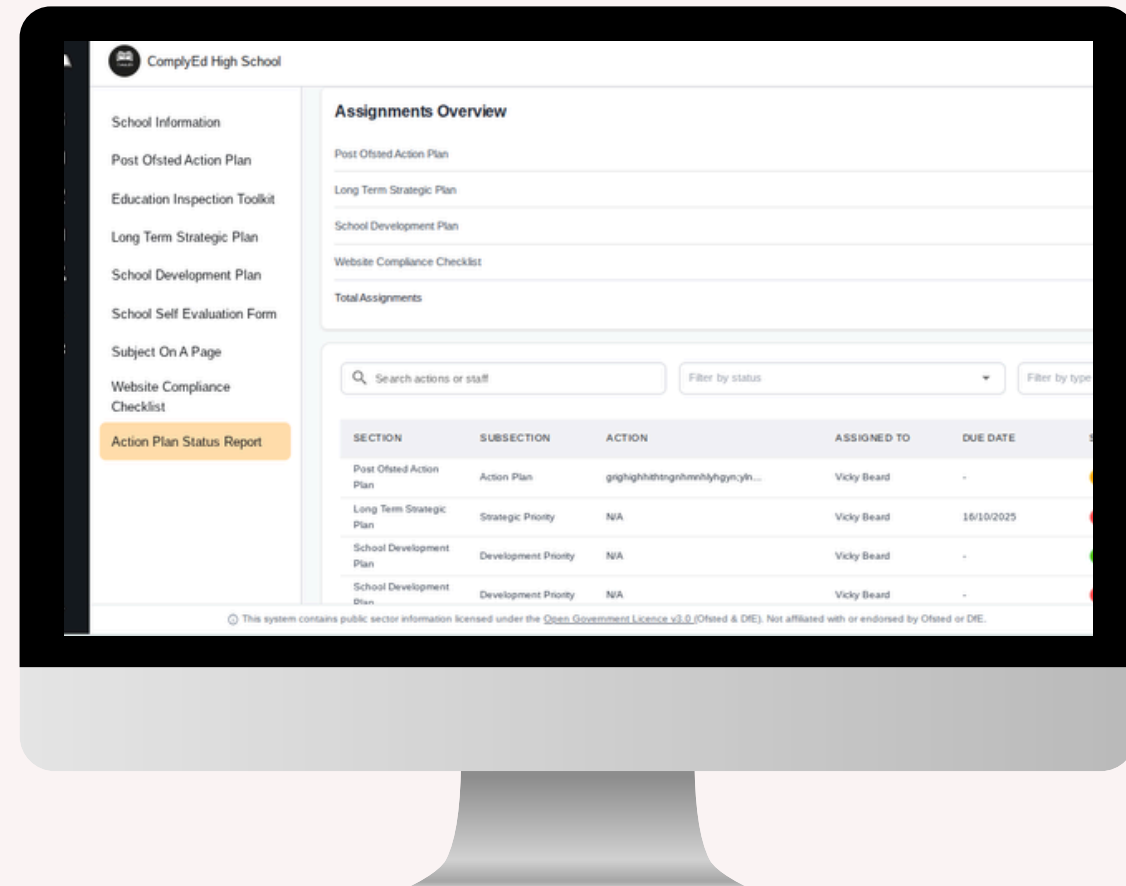


Action Plan Status Report

The Action Plan Status Report gives leaders a clear overview of workload distribution and progress tracking across the school's improvement priorities.

Quickly locate actions by section, assigned staff member, due date, or status, ensuring that overdue actions can be easily identified and prioritised

Use the notification feature to alert assigned staff when an action has not been completed or has become overdue, helping to maintain accountability and timely progress



Contact Us

Our team have over 60 years' combined administrative experience, and a significant amount of expertise within the education sector.

As a result, we understand the issues school leaders face when it comes to managing a comprehensive monitoring system for school inspections. That's what led us to develop the ComplyEd Web App.

For more information about how we can help, simply contact our team today for a no-obligation conversation.



enquiries@complyed.co.uk



complyed.co.uk

